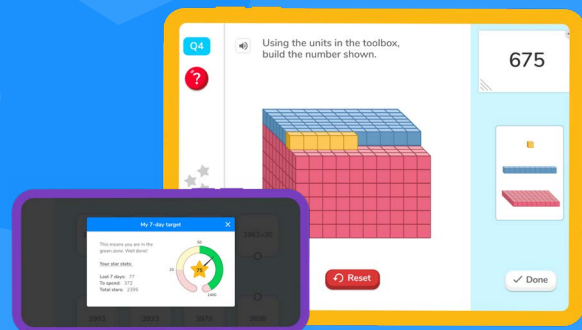




Using Doodle as a whole-school learning solution

Case study: Bowmandale Primary School, Lincolnshire



Used as a homework and teaching tool, Bowmandale Primary School use Doodle to consolidate their pupils' knowledge and build their love of learning.

We spoke to Jessica, the school's Maths Lead, about how Doodle has motivated pupils to learn outside of school and enabled staff to easily identify pupils' learning gaps.



327,185

questions set automatically
by Proxima

Hi Jessica! Please could you give us a brief overview of how you use Doodle in your school?

We use Doodle as an in-school task, and the children have home access. We have a target number of times for the children to access Doodle in school [and] set it as regular homework. To encourage the use of Doodle, we give out weekly token rewards to all children in the green zone (a zone children can reach by earning the weekly target number of stars set by Doodle).

We use the top class % from each Key Stage to create a weekly Doodle celebration board, and the top classes are allowed to choose a reward, such as extra break. We also give out certificates to children who have stood out for trying really hard or have achieved a particular streak.

1,100.9

hours of teacher time saved

Do parents get involved with Doodle at home?

Parents have commented positively on Doodle and told us how much their child is enjoying going on it at home. We also had some children take part in the DoodleMaths Summer Challenge (a seasonal event where children can earn rewards by using Doodle 'little and often').

327,736

questions answered over
the last 12 months

"Doodle has helped staff because of the personalised nature of the programme ... You have an assurance that each child is being challenged and supported on their own journey."

— Jessica, Maths Lead, Bowmandale Primary School

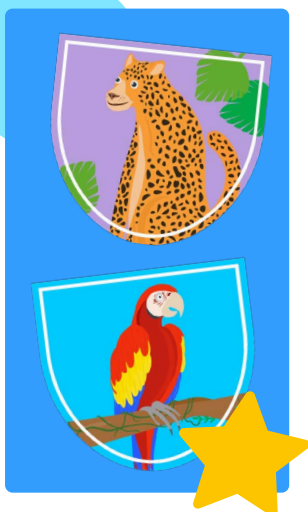
Has Doodle had an impact on pupils' confidence and attainment?

Our children are really excited and enthusiastic about Doodle. You can see the enjoyment they have when they access it in school, and we have had positive feedback from parents about their children wanting to access it at home.

And finally, has Doodle helped to reduce staff workloads?

Doodle has helped staff because of the personalised nature of the programme. It means that you have an assurance that each child is being challenged and supported on their own journey.

The online Teacher Dashboard also helps them spot gaps in learning, as they can see which questions have been answered from the curriculum and how confidently. Doodle has helped staff to show progress over time as it shows the 'age' the children are working at, and this can be tracked.



Would you like to see how Doodle can support your school?

Book a free 15-minute chat with our team to find out more!

Scan the QR code or visit teachers.doodlelearning.com/schools-book-consultation

01225 591134

doodlelearning.com/for-schools